



KISSLING MICRO SWITCH

Series MFX1

Quality Switch

Our KISSLING micro switches have been specifically designed for mission critical applications with extended environmental requirements.

These high quality MFX micro switches are precise and display both reliable and consistent switching behavior under the harshest conditions and over product lifespans of 10 million cycles. The switch has a load switching range from 0.1A up to 6A (AC). The housings are made of thermoplastic. They are sealed up to IP40 depending on the configuration.

This series offers high switching security, since in operation the moving contact is activated in a cross traverse with respect to the fixed contact. This movement provides automatic self cleaning of the main contact surface and inhibits welding or sticking. These switches are intended to be used in extreme environmental conditions.

Features

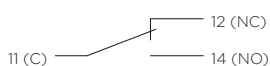
- 1-pole switches available
- Nominal load up to 5A at 250VAC
- Min. switching current 10mA at 12VDC
- Switching frequency up to 200 cycles/min.
- Variety of available actuator geometries and sizes
- High quality silver alloy or gold plated contacts

Applications

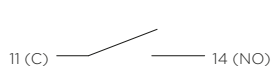
- Automotive equipment
- General mechanical engineering
- Appliance and industrial engineering
- Medical equipment
- Commercial vehicles

Switching function

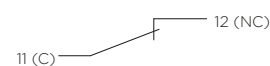
Change-over



NO



NC



KISSLING MICRO SWITCH

Series MFX1

Specification

Technical Data

Housing Material	Thermoplast GF
Interior protection	IP40 IEC 60529
Protection terminals	IPO0 IEC 60529

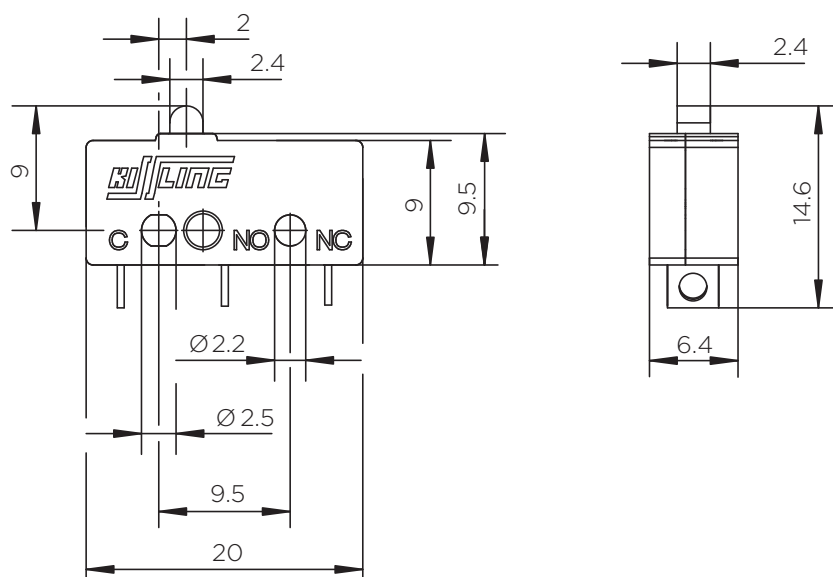
Mechanical Data (Change-over)

Pre-travel	0.2mm - 0.6mm
Overtravel	> 0.8mm
Movement differential	0.01mm - 0.12mm
Operating force	0.8N - 2.0N
Release force	> 0.4N
Current carrying parts	CuZn-alloy
Contact material	Ag
Mechanical life	10Mio.
Frequency	max. 200/min
Temperature range	-10°C to +85°C

Electrical data

Nominal voltage	250VAC, 24VDC
Continuous current	5A
Min. switching capacity	12VDC, 10mA

Technical drawings

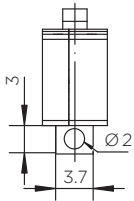


KISSLING MICRO SWITCH

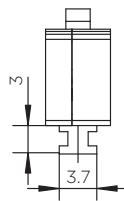
Series MFX1

Connection types

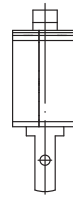
Solder connection



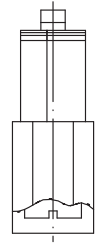
Solder connection



Faston terminals
for receptacles 2.8 x 0.5



Screw terminals
M3 x 4 ISO 1580



Ordering Information

Part Number
example: MFX1.011.202
MFX1.____.____

Actuator

01	Standard
----	----------

Switching function

1	Change-over
2	NO
3	NC

Connection types

01	Solder Connection Ø2
02	Solder Connection
05	Faston terminals 2.8 x 0,5
06	Screw terminals M3 x 4

Class

2	Standard
---	----------

te.com

TE Connectivity, TE, TE connectivity (logo) and KISSLING (word) are trademarks owned or licensed by the TE Connectivity family of companies. All other logos, products and/or company names referred to herein might be trademarks of their respective owners.

The information given herein, including drawings, illustrations and schematics which are intended for illustration purposes only, is believed to be reliable. However, TE Connectivity makes no warranties as to its accuracy or completeness and disclaims any liability in connection with its use. TE Connectivity's obligations shall only be as set forth in TE Connectivity's Standard Terms and Conditions of Sale for this product and in no case will TE Connectivity be liable for any incidental, indirect or consequential damages arising out of the sale, resale, use or misuse of the product. Users of TE Connectivity products should make their own evaluation to determine the suitability of each such product for the specific application.

© 2020 TE Connectivity | All Rights Reserved.
K1166739 | Version 08/2020