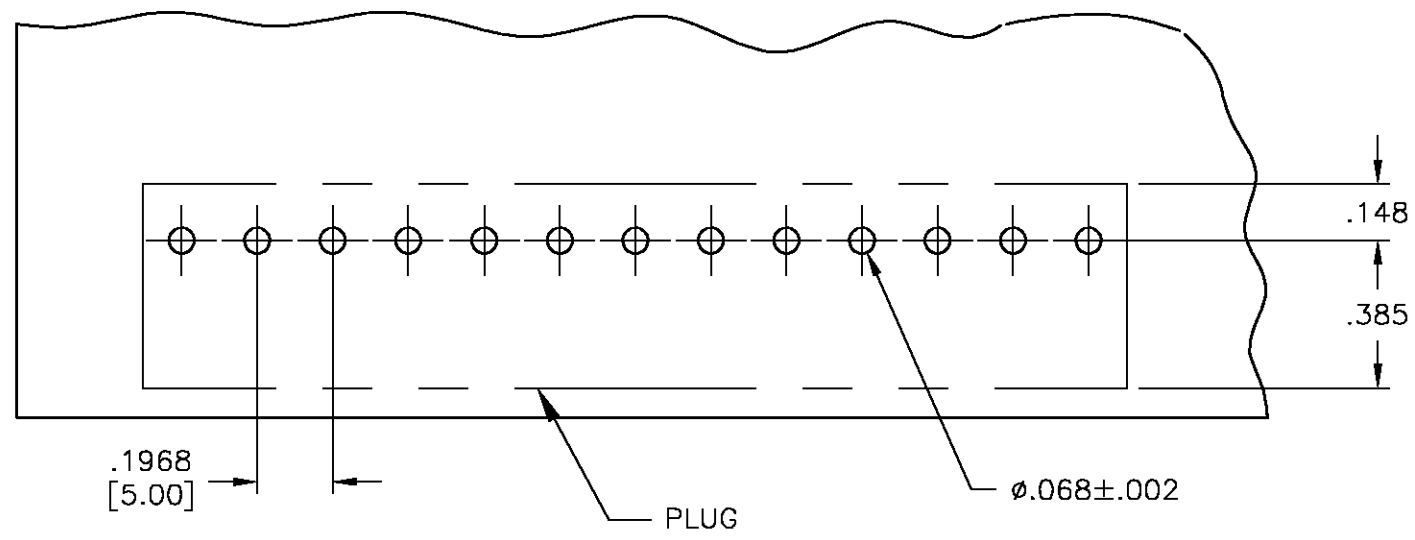


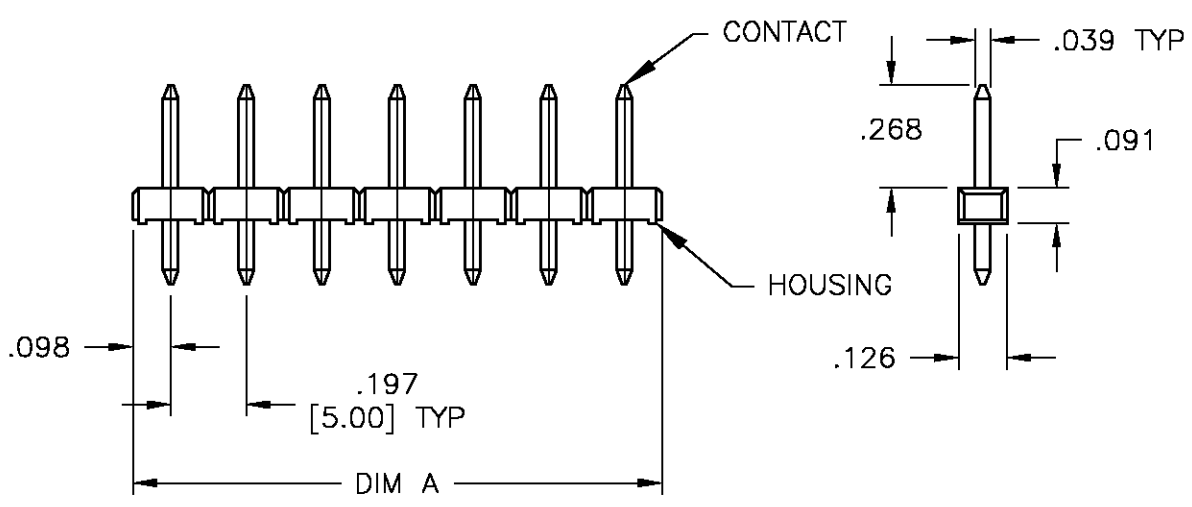
THIS DRAWING IS UNPUBLISHED. RELEASED FOR PUBLICATION  
 © COPYRIGHT BY TYCO ELECTRONICS CORPORATION. ALL RIGHTS RESERVED.

| LOC | DIST | REVISIONS                |         |     |      |
|-----|------|--------------------------|---------|-----|------|
| P   | LTR  | DESCRIPTION              | DATE    | DWN | APVD |
|     | 0    | REVISED PER 0G3B-0073-05 | 2/14/05 | SS  | CR   |

NOTES:  
 MATERIAL:  
 HOUSING: PPS, COLOR: BLACK.  
 CONTACT: PHOSPHOR BRONZE, TIN OVER NICKEL PLATED.  
 1. ALL DIMENSIONS ARE FOR REFERENCE ONLY.  
 2. DIMENSIONS IN [ ] ARE IN MILLIMETERS.



RECOMMENDED PCB HOLE LAYOUT



| DIM A          | POSN | TYCO PART NUMBER |
|----------------|------|------------------|
| 120MM (4.7244) | 24   | 2-1776452-4      |
| 110MM (4.3307) | 22   | 2-1776452-2      |
| 100MM (3.9370) | 20   | 2-1776452-0      |
| 90MM (3.5433)  | 18   | 1-1776452-8      |
| 85MM (3.3464)  | 17   | 1-1776452-7      |
| 80MM (3.1496)  | 16   | 1-1776452-6      |
| 75MM (2.9527)  | 15   | 1-1776452-5      |
| 70MM (2.7559)  | 14   | 1-1776452-4      |
| 65MM (2.5590)  | 13   | 1-1776452-3      |
| 60MM (2.3622)  | 12   | 1-1776452-2      |
| 55MM (2.1654)  | 11   | 1-1776452-1      |
| 50MM (1.9685)  | 10   | 1-1776452-0      |
| 45MM (1.7716)  | 9    | 1776452-9        |
| 40MM (1.5748)  | 8    | 1776452-8        |
| 35MM (1.3779)  | 7    | 1776452-7        |
| 30MM (1.1811)  | 6    | 1776452-6        |
| 25MM (.9842)   | 5    | 1776452-5        |
| 15MM (.5905)   | 4    | 1776452-4        |
| 15MM (.5905)   | 3    | 1776452-3        |
| 10MM (.3937)   | 2    | 1776452-2        |

|   |             |                              |   |                    |                         |                    |       |       |        |       |         |        |       |                   |                       |  |
|---|-------------|------------------------------|---|--------------------|-------------------------|--------------------|-------|-------|--------|-------|---------|--------|-------|-------------------|-----------------------|--|
| THIS DRAWING IS A CONTROLLED DOCUMENT.  |             | DWN<br>S SCHLEGEL<br>2/14/05 | Tyco Electronics Corporation<br>Harrisburg, Pa 17105-3608 |                    |                         |                    |       |       |        |       |         |        |       |                   |                       |  |
| DIMENSIONS:<br>INCHES   |             | CHK<br>C RICHARD<br>2/14/05  |   |                    |                         |                    |       |       |        |       |         |        |       |                   |                       |  |
| TOLERANCES UNLESS OTHERWISE SPECIFIED:  |             | APVD<br>C RICHARD<br>2/14/05 | NAME<br>HEADER ASSEMBLY 5mm<br>LEAD FREE                  |                    |                         |                    |       |       |        |       |         |        |       |                   |                       |  |
| <table border="1"> <tr><td>0 PLC</td><td>± -</td></tr> <tr><td>1 PLC</td><td>± -</td></tr> <tr><td>2 PLC</td><td>± .01</td></tr> <tr><td>3 PLC</td><td>± .005</td></tr> <tr><td>4 PLC</td><td>± .0005</td></tr> <tr><td>ANGLES</td><td>± 1/2</td></tr> </table> |             | 0 PLC                        | ± -   | 1 PLC              | ± -                     | 2 PLC              | ± .01 | 3 PLC | ± .005 | 4 PLC | ± .0005 | ANGLES | ± 1/2 | PRODUCT SPEC<br>- | APPLICATION SPEC<br>- |  |
| 0 PLC   | ± -         |                              |   |                    |                         |                    |       |       |        |       |         |        |       |                   |                       |  |
| 1 PLC   | ± -         |                              |   |                    |                         |                    |       |       |        |       |         |        |       |                   |                       |  |
| 2 PLC   | ± .01       |                              |   |                    |                         |                    |       |       |        |       |         |        |       |                   |                       |  |
| 3 PLC   | ± .005      |                              |   |                    |                         |                    |       |       |        |       |         |        |       |                   |                       |  |
| 4 PLC   | ± .0005     |                              |   |                    |                         |                    |       |       |        |       |         |        |       |                   |                       |  |
| ANGLES  | ± 1/2       |                              |   |                    |                         |                    |       |       |        |       |         |        |       |                   |                       |  |
| MATERIAL<br>-   | FINISH<br>- | WEIGHT<br>-                  | SIZE<br>A3  | CAGE CODE<br>00779 | DRAWING NO<br>C-1776452 | RESTRICTED TO<br>- |       |       |        |       |         |        |       |                   |                       |  |
| CUSTOMER DRAWING  |             |                              | SCALE<br>NTS  | SHEET<br>1 OF 1    | REV<br>0                |                    |       |       |        |       |         |        |       |                   |                       |  |