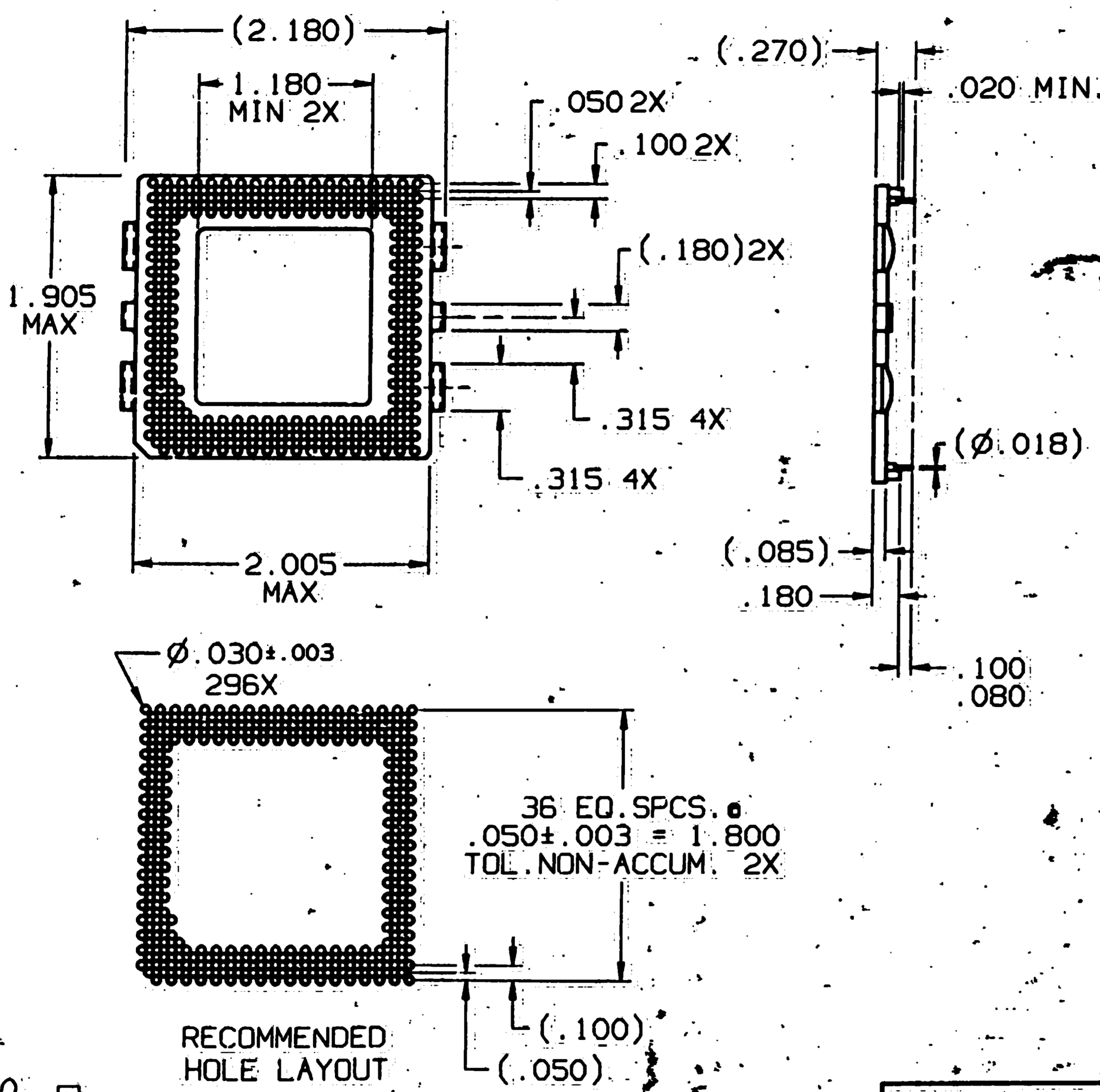


4 3 2 1

CONVERSION CHART	
INCH	MM
.018	0.46
.020	0.51
.030	0.77
.050	1.27
.100	2.54
.080	2.04
.085	2.16
.100	2.54
.110	2.79
.154	3.91
.180	4.57
.270	6.86
.315	8.00
1.180	29.97
1.905	48.39
2.005	50.93
2.180	55.37



SPECIFICATIONS

MATERIALS:
 INSULATOR: THERMOPLASTIC POLYESTER UL RATED 94V-0
 CONTACT: COPPER ALLOY, GOLD PLATE.
 SLEEVE: COPPER ALLOY, TIN/LEAD PLATED.

ELECTRICAL:
 CONTACT RESISTANCE: 10 MILLIOHMS MAX.
 CONTACT RATING: 3 AMPS
 CAPACITANCE: 1.0 pF PER MIL-STD-202, METHOD 305.
 DIELECTRIC WITHSTANDING VOLTAGE: 1000 VOLTS (RMS) PER MIL-STD-1344, METHOD 3001.1

MECHANICAL:
 INSERTION FORCE: 37 GRAMS AVERAGE WHEN MEASURED WITH Ø.018 POLISHED STEEL PIN.
 WITHDRAWAL FORCE: 15 GRAMS AVERAGE WHEN MEASURED WITH Ø.018 POLISHED STEEL PIN.

ENVIRONMENTAL:
 OPERATION TEMPERATURE: -55°C TO +105°C

- NOTES: UNLESS OTHERWISE SPECIFIED**
1. INTERPRET DRAWING PER ASME Y14.5M-1994.
 2. ACCEPTS INTEL ® P54C DEVICE.

THIS IS A C.A.D. GENERATED DRAWING. DO NOT MAKE MANUAL REVISIONS TO MASTER.

OUTLINE DRAWING
 SPECIFICATIONS ARE SUBJECT TO CHANGES WITHOUT NOTICE.

REV	0
REVISIONS	INT'L RELEASE ESR# A7250 T.D. 1-16-96 APP.D: D. O'Neill 1-16-96

THIRD ANGLE PROJECTION

TOLERANCES (EXCEPT AS NOTED)
 DECIMAL .XXX = .010
 MM .XXX = 0.25

AUGAT CONFIDENTIAL
 This document contains information which is the exclusive property of Augat Inc. Distribution, reproduction or use by others is not permitted without the expressed written consent of Augat Inc.

UNLESS OTHERWISE SPECIFIED DIMENSIONS ARE IN INCHES. DO NOT SCALE PRINT.

FILE NAME: 7D37B40L DIRECTORY: PS2540IN

MATERIAL: SEE ABOVE

FINISH: SEE ABOVE

ORIGINAL DATE OF DRAWING: 1-16-96

DRAWN: TRU-D DATE: 1-16-96

CHECKED: DATE:

APPROVED: *D. O'Neill* DATE: 1-16-96

CODE IDENT. NO: 91506 DWG. SIZE: B

NEXT ASSY:

AUGAT INC. 452 JOHN DIETSCH BLVD. ATTLEBORO FALLS, MA 02763

TITLE: **OUTLINE DRAWING**
SOCKET ASSEMBLY

DWG. NO: PIM296-7D37B4-V REV: 0

PRODUCT CODE: 162

SCALE: NONE SHEET 1 OF 1

Property of Tyco Electronics Corporation, Jul 9 2002
 CUSTOMER DRWG: 9-1437521-7 REV: 0 PG 1 OF 1